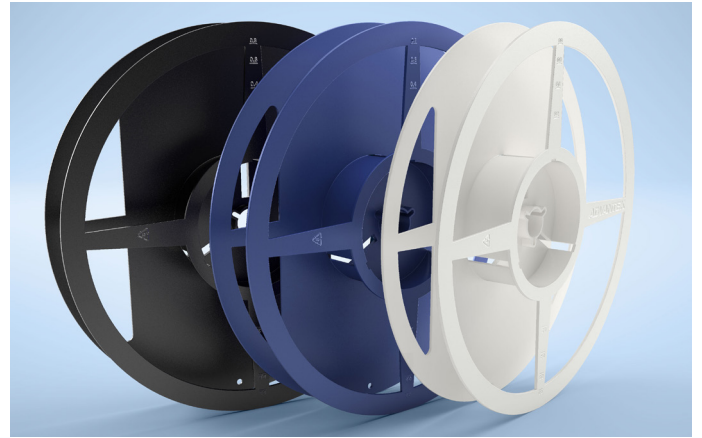


Advantek's LOKREEL Mini RJ Component packaging reels provide excellent protection when shipping small components packaged in carrier tape, such as bare die and small integrated circuit packages. It's made from general-purpose and high-impact polystyrene for added strength and durability. The 7" LOKREEL Mini RJ reels are available in a variety of widths.

- > Available in 8, 12, 16, 24 and 32mm widths
- > Reel flange accommodates labels up to 2"x4"
- > Available in static dissipative (P/N suffix: WT/BL/BK) or with tighter SR (P/N suffix: DBK)
- > Reels may be ordered in white, blue or black



Material Properties

Property	Typical Value	Test Method
Tensile Strength	20 MPa	ISO 572
Elongation	40%	ISO 572
Izod Impact Strength	16JK/m2	ASTM D 256
Flexural Modulus	1,360 MPa	ISO 178
Heat Distortion Temperature	77°C	ASTM D 648
Specific Gravity	1.03	ASTM D 792
Surface Resistivity	WT/BL/BK: $\geq 1.0E5$, $< 1.0E12$ Ohms/sq. DBK: $\geq 1.0E5$, $< 1.0E10$ Ohms/sq.	ASTM D 257
Color	White, Blue, Black	N/A

Note: The values presented for this product are typical laboratory data and may be changed without notice.

Construction

7" LOKREEL® Mini RJ Reels are injection-molded using both General-Purpose Polystyrene (GPPS) and High-Impact Polystyrene (HIPS).

Configurations

LOKREEL® Mini RJ have an outside diameter of 7" (180mm) and a 1/2" (13mm) diameter arbor hole. Reel hub measures 2.36" (60mm) in diameter. Reels are available in a variety of hub widths. The 7" LOKREEL® Mini RJxxDBK is compliant with EIAJ standard in terms of dimensions and surface resistivity.

Shelf Life and Storage

We recommend LOKREEL® Mini RJ reels be used within 2 years of the date of manufacture. Store this product in its original packaging in a climate-controlled environment where temperature ranges from 21°C ± 17°C (70°F ± 30°F). Allow the product to stabilize at room temperature prior to use. The mechanical integrity of the product is not affected by humidity.

Ordering Information

Hub Width	White	Blue	Black	DBK
8mm	RJ708WT	RJ708BL	RJ708BK	RJ708DBK
12mm	RJ712WT	RJ712BL	RJ712BK	RJ712DBK
16mm	RJ716WT	RJ716BL	RJ716BK	RJ716DBK
24mm	RJ724WT	RJ724BL	RJ724BK	RJ724DBK
32mm	RJ732WT	RJ732BL	RJ732BK	RJ732DBK